

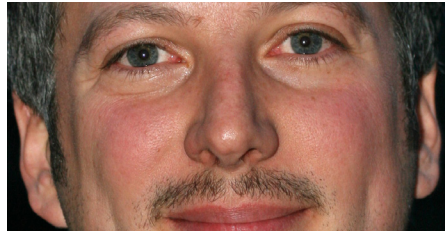
svimportports.com

### Barbolini Lambrusco Lancillotto D.O.C.

Estate: **Barbolini**  
Location: **Emilia-Romagna, Italy**  
Varietals: **100% Lambrusco Grasparossa**  
This Lambrusco is not a sweet wine, but delightfully briny and a bit dry, with a lush generous body. The ripe-fruit sweetness and raspberry aromas are enhanced by the delicate bubbles.



Discovering the best hand-harvested, family-owned, earth-friendly Mediterranean wine.



svimportports.com

### Barbolini Lambrusco Lancillotto D.O.C.

Estate: **Barbolini**  
Location: **Emilia-Romagna, Italy**  
Varietals: **100% Lambrusco Grasparossa**  
This Lambrusco is not a sweet wine, but delightfully briny and a bit dry, with a lush generous body. The ripe-fruit sweetness and raspberry aromas are enhanced by the delicate bubbles.



Discovering the best hand-harvested, family-owned, earth-friendly Mediterranean wine.



svimportports.com

### Barbolini Lambrusco Lancillotto D.O.C.

Estate: **Barbolini**  
Location: **Emilia-Romagna, Italy**  
Varietals: **100% Lambrusco Grasparossa**  
This Lambrusco is not a sweet wine, but delightfully briny and a bit dry, with a lush generous body. The ripe-fruit sweetness and raspberry aromas are enhanced by the delicate bubbles.



Discovering the best hand-harvested, family-owned, earth-friendly Mediterranean wine.



svimportports.com

### Barbolini Lambrusco Lancillotto D.O.C.

Estate: **Barbolini**  
Location: **Emilia-Romagna, Italy**  
Varietals: **100% Lambrusco Grasparossa**  
This Lambrusco is not a sweet wine, but delightfully briny and a bit dry, with a lush generous body. The ripe-fruit sweetness and raspberry aromas are enhanced by the delicate bubbles.



Discovering the best hand-harvested, family-owned, earth-friendly Mediterranean wine.



svimportports.com

### Barbolini Lambrusco Lancillotto D.O.C.

Estate: **Barbolini**  
Location: **Emilia-Romagna, Italy**  
Varietals: **100% Lambrusco Grasparossa**  
This Lambrusco is not a sweet wine, but delightfully briny and a bit dry, with a lush generous body. The ripe-fruit sweetness and raspberry aromas are enhanced by the delicate bubbles.



Discovering the best hand-harvested, family-owned, earth-friendly Mediterranean wine.



svimportports.com

### Barbolini Lambrusco Lancillotto D.O.C.

Estate: **Barbolini**  
Location: **Emilia-Romagna, Italy**  
Varietals: **100% Lambrusco Grasparossa**  
This Lambrusco is not a sweet wine, but delightfully briny and a bit dry, with a lush generous body. The ripe-fruit sweetness and raspberry aromas are enhanced by the delicate bubbles.



Discovering the best hand-harvested, family-owned, earth-friendly Mediterranean wine.